

**Lanco Solar Energy Pvt Ltd wins most prestigious
ISA Technovation Award
For Most Innovative Product Award 2012**

Innovative Solar PV Power Generators for rooftop markets in India

**Special
Features**

Quick assembly concept
leading reduction in
man-hours

Foundation which will
not cause permanent
damage to the roof

Ease of shifting the
installation later

Economically &
ergonomically effective

Seasonal tilt - Adjustable
tilt of the system in the
range between 20 - 30°

Grid- interactive & stand
alone capability in the
same package.

Modular design for
systems from 1 to 10 kW

Access - Unhindered
access around each
module for maintenance
& cleaning

Power Warranty

**25 Years Power
degradation warranty**

**(5 Years 95%, 12 Years
90%, 18 years 85%, 25
years 80%)**

**15% to 30% reduction
in installation cost**

Innovative **Plug-&Play** solar PV product (complete with panels, mounting structures, batteries, and power conditioning unit) designed to cater to off-grid solar solutions in urban and rural hinterlands. Utmost care given to facilitate easy layman-assembly to support rural requirements. Modular design to scale from 500W to 5000W. Successful installation and operation in Grameen Bank, rural health centers, industrial utilities, schools, and tribal hostels in UP, Chhattisgarh and Orissa.

The new Plug & Play product is an integrated power appliance that does it all The Plug & Play introduces a new feature to the world of renewable energy: Simplicity. This product provides a comprehensive answer for Grid-interactive and Standalone power systems. Based upon a proven foundation of reliable technology, but engineered from the ground up to simplify the design, distribution, installation and implementation of energy storage, the easy to install structure and integration with control cabinet make it easy to provide a successful solution to any power requirement, anywhere.



Plug & Play module mounting structure for Rooftop projects

Plug & Play Structure Specifications:

	PPS 60	Power Conditioning Unit	
<i>Functional Parameters</i>			
Max. Power/ Structure (in Watts)	500 W	System Capacity	Upto 3.3 KW
Nos. of module can be mounted	02 (60 cell module)	Voltage	48-DC/230 AC
Module mounting position	Landscape	Dimension (in m)	1.3X0.65X0.65
Module mounting method	SS 304 Clamps		
Installation time (in minutes)	20min – 30min		
<i>Mechanical</i>		<i>Modules</i>	
Dimension (in mm) L x W x H	3000 x 1150 x 660	Mono-crystalline	240-280 W
Area required (in sq m)	4	Multi-crystalline	230-250W
Weight w/o windshield (in kg)	34 Kg	Based on 60 cell module	
Material (Section's/ Member's)	Mild Steel/ CRC sheet/ Structural steel	Also expandable to 72 cells	
Maximum designed wind speed	170 km/hr		
Surface protection	Galvanized (20 micron) with PU powder coating		

Special Features

Quick assembly concept leading reduction in man-hours

Foundation which will not cause permanent damage to the roof

Ease of shifting the installation later

Economically & ergonomically effective

Seasonal tilt - Adjustable tilt of the system in the range between 20 - 30°

Grid- interactive & stand alone capability in the same package.

Modular design for systems from 1 to 10 kW

Access - Unhindered access around each module for maintenance & cleaning

Power Warranty

25 Years Power degradation warranty

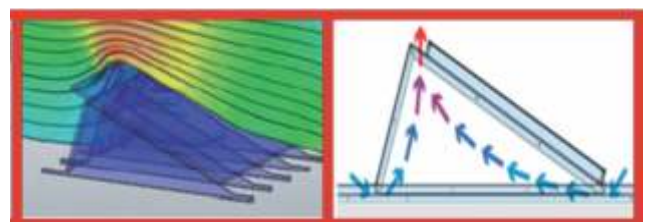
(5 Years 95%, 12 Years 90%, 18 years 85%, 25 years 80%)

15% to 30% reduction in installation cost



Mounting Structure Benefit's:

- Adjustable tilt of the system in the range between 20 - 30°.
- Ballast tub for holding the ballast. (Non penetrating solution).
- Windshield to reduce wind load on rack.
- Quick assembly concept – being pre fabricated, the system significantly reduces on-roof construction and installation time.
- Access – unhindered access around each module for maintenance & cleaning.
- Inbuilt natural convection cooling – facilitating free upwards air passage beneath the modules.
- Galvanized steel with powder coating for improved outdoor weather conditions.
- Designed to sustain wind speed up to 170 Km/hr.
- Less amount of ballast required for holding the structure.



For Enquires Contact : solar@lancogroup.com

Plot No. 229, Phase – I, Udyog Vihar, Gurgaon - 122 016, Haryana, India, Tel: +91 (124) 469 1000, www.lancogroup.com
UNIT 321, 3RD Floor Raheja Chambers, No. 12, Museum Road, Bangalore - 560001, Tel: +080 25550101

Disclaimer: This document contains information basis research and the project undertaken by LANCO Solar. While due care has been taken to ensure the accuracy and completeness of the information supplied herein, LANCO Solar cannot be held responsible for any errors or omissions.