

# Lanco Solar

Simple | Clean | Green | Sustainable | Positive



---

LSP WWW M-72 Cell  
Mono Series

## LANCO SOLAR MODULE CHARACTERISTICS

### Electrical Data @ STC

|                           | MODEL | LSP290M | LSP295M | LSP300M | LSP305M | LSP310M |
|---------------------------|-------|---------|---------|---------|---------|---------|
| Power Max                 | W     | 290     | 295     | 300     | 305     | 310     |
| Short Circuit Current-Isc | A     | 8.50    | 8.56    | 8.62    | 8.68    | 8.73    |
| Open Circuit Voltage-Voc  | V     | 45.4    | 45.8    | 46.2    | 46.6    | 47.0    |
| Current at Max Power-Imp  | A     | 7.79    | 7.85    | 7.9     | 7.99    | 8.07    |
| Voltage at Max Power-Vmpp | V     | 37.2    | 37.6    | 38      | 38.2    | 38.4    |
| Fill Factor               | %     | 75.1%   | 75.3%   | 75.4%   | 75.5%   | 75.5%   |
| Module Efficiency         | %     | 14.8%   | 15.0%   | 15.3%   | 15.6%   | 15.8%   |

### General Characteristics

|                             |      |            |
|-----------------------------|------|------------|
| Power Tolerance             | W    | -0 + 5W    |
| System Voltage              | V    | 1000       |
| Operating Temperature       | °C   | -40 to +85 |
| NOCT                        | °C   | 47 +/- 2   |
| Temp coefficient of Current | %/°C | +0.06      |
| Temp coefficient of Voltage | %/°C | -0.31      |
| Temp coefficient of Power   | %/°C | -0.43      |

### Module Construction Details

|                          |  |
|--------------------------|--|
| No. of cells and Matrix  | 72 (12 x 6)  |
| Junction Box Rating      | IP 65  |
| Junction Box Fuse Rating | 15A  |
| Aluminum Frame           | AL 6063 T5   |
| Solar Glass              | High Transmittance 3.2mm Textured & Tempered Glass |
| Junction Box Cables      | 1000 mm long with MC4 compatible connectors        |

### Certifications

|                        |   |
|------------------------|---|
| Product Certifications | IEC 61215, IEC 61730, IEC 61701               |
| Certification Lab      | TUV Rheinland and Intertek                    |
| Plant Certifications   | ISO 9001:2008, ISO 14001 and OHSAS 18001:2007 |


### Special Features

- 100% inspection by EL - Microcrack free Modules
- Positive Power Tolerance [-0 & +5W]
- Inlaid RFID Tags
- Highly Automated Assembly Line
- High Quality Induction Soldered Joints
- High Fill factor and low series Resistance
- Solar PV modules Suitable for All Climates.
- 10 Year Replacement Warranty on Workmanship

### 25 Year Power Performance Guarantee

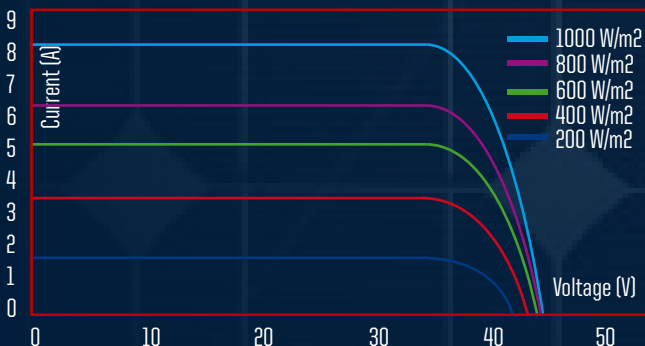


### Module Mechanical & Packing Details

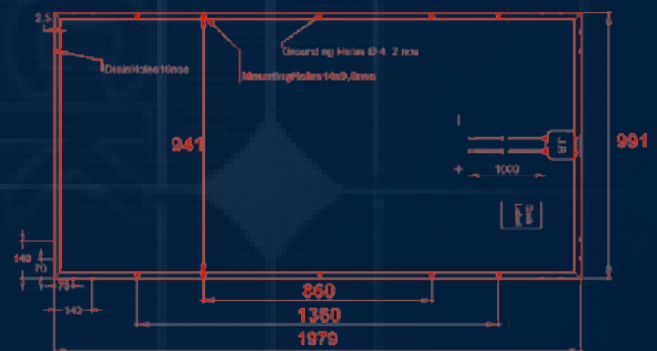
|                                    |   |
|------------------------------------|---|
| Module size                        | 1979 x 991 x 40 mm +/- 1mm  |
| Module Mounting Dimensions         | 8 Mounting Holes of Size: 9 x 14mm<br>4 @ 1360 X 941 +/- 3mm & 4 @ 860 X 941 +/- 3mm  |
| Module Weight                      | 23.5 kg   |
| Frame Joint & Drain Hole details   |  |
| No. of Modules in pallet           | 24 No's   |
| No. of Pallets in 40feet Container | 24 No's   |
| No. of Modules per Container       | 576 No's (167 KW to 178 KW)   |

### IV Characteristics

#### IV Curve at STC : Variation with irradiance level



### Dimensional Drawing as seen from backside



CAUTION: READ SAFETY AND INSTALLATION INSTRUCTIONS BEFORE USING THE PRODUCT.

© Oct 2013 Lanco Solar Pvt Limited. All rights reserved. Specifications included in this datasheet are subject to change without notice

[www.lancosolar.com](http://www.lancosolar.com) | email : [sales@lancosolar.com](mailto:sales@lancosolar.com)